



DSW 5 Double Swing Gate Installation and Set Up



DIY Automatic Gate Kits
Solar & Low Voltage Specialists

PH 1800 111 930

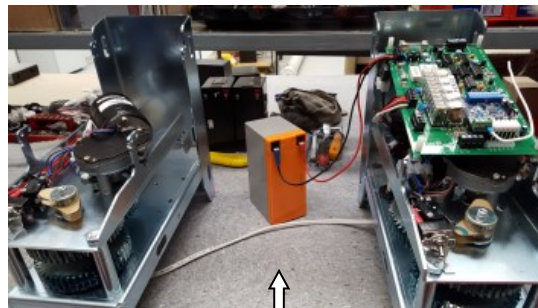
info@gforceautogates.com.au

www.gforceautogates.com.au

WARNING: Care should be taken as there are moving components inside the gate motor that may cause damage or personal injury.

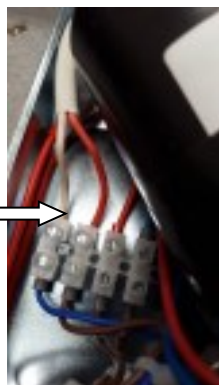
Pre Installation Set Up and Testing

Follow the *Pre Installation Set Up and Testing* according to the instructions provided. In addition to this, connect a 2 core wire (1.5mm Twin Active cable) from the slave motor to the motor 2 terminals on the circuit board. When the gate motors are activated they should rotate in opposite directions. Refer to *Setting the Motor Directions* for instructions on changing the motor directions.

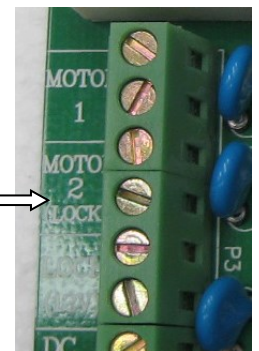


Typical Bench Set Up and Test

Slave Motor Power Connection Terminal Block



Slave Motor Power Connection Motor 2 Circuit board Terminals



Double Gate Motor Installation

Determine which side to mount the MASTER motor (the gate motor with the the circuit board and battery). Typically, the master motor is located on the side of incoming power.

For mounting the gate motor, refer to the *Mounting the Gate Motor* section in the instructions provided. An interconnecting low voltage cable will need to be installed from the master motor to the slave motor . We recommend 1.5mm twin active lighting cable for this.



DSW 5 Double Swing Gate Installation and Set Up (continued)



DIY Automatic Gate Kits
Solar & Low Voltage Specialists

PH 1800 111 930

info@gforceautogates.com.au

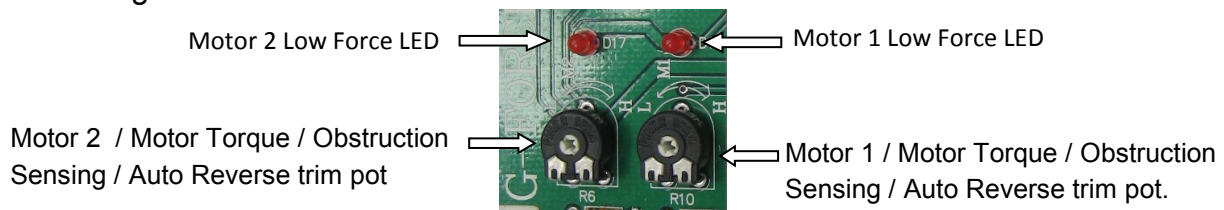
www.gforceautogates.com.au

Motor Torque / Obstruction Sensing / Auto Reverse Adjustment

This adjustment controls the motor torque and obstruction sensing of the gate motor. The motor needs to have enough torque (force) to fully open and close the gate however the more torque the motor has the less obstruction sensitivity there is and therefore may hit an obstruction more forcefully.

Turn the Motor 1 and Motor 2 trim pots clockwise to increase sensitivity to an obstruction. Turn the Motor 1 and Motor 2 trim pots anti-clockwise to increase the motor torque (force) of the motor.

An obstruction will cause the gate motors to STOP during OPENING or STOP and AUTO REVERSE if the gate is CLOSING.



Open delay / Close Delay Trim Pot Adjustment

Please read the 'Trim Pot Caution' attachment included with this manual

Determine which gate will need to open first & therefore close last. Typically, one or other of the gates may be fitted with a 'lip' or 'tag' to help align the gates when closed. The lip or tag may be fitted to the leading edge of the first-closing gate or the trailing edge of the last-closing gate. If the double gates require a delay in opening / closing to avoid clashing, then the motor (master motor or slave motor) of the first opening gate / last closing gate must be connected to Motor 2 terminal.

The master motor is factory set to be Motor 1, for mounting the gate motor on the inside left hand gate post. Motor 2' can be assigned to either the master or slave gate motors.

Refer to the "SW 700 Circuit Board" data sheet included with this manual and locate the open time delay trim pot (R19) and turn clockwise to increase the time delay between the opening of the two gates.

Refer to the "SW 700 Circuit Board" data sheet included with this manual and locate the close time delay trim pot (R20) and turn clockwise to increase the time delay between the closing of the two gates.

